

WESTCHESTER
*Choral
Society*

LYNDON WOODSIDE, MUSIC DIRECTOR



WINTER CONCERT

JANUARY 28, 1989

About The Chorus

Welcome to the forty-eighth season of the Westchester Choral Society. In our Winter Concert we are proud to premiere four computer harmonizations of Bach chorales by IBM researcher Kemal Ebcioglu; we have arranged our program to contrast Bach and the machine and we invite your comments!

The Westchester Choral Society was formed by nine singers in 1942 to perform Bach's Mass in B Minor; we have expanded both our membership (now 100 men and women) and our repertoire. Our members hail from all over Westchester County, New York City, Connecticut and New Jersey; we come from diverse backgrounds but with a common love of choral singing.

Our repertoire spans baroque, classical, romantic and contemporary compositions, including major works of Bach, Beethoven, Berlioz, Bernstein, Brahms, Dvorak, Faure, Haydn, Mozart, Orff, Poulenc, Schubert, Verdi, and Vivaldi. The chorus presents two annual concerts at the Performing Arts Center, SUNY Purchase, with professional soloists and orchestra. We have performed in New York at Carnegie Hall and Alice Tully Hall with the American Symphony and Eve Queler's Opera Orchestra, with Summerfare, and the New Orchestra of Westchester. During Lyndon Woodside's tenure as music director, the group has gained recognition. The WCS performance of Haydn's *Creation* was praised by the Haydn Foundation as the "finest production of its kind," and the chorus presented Mozart's *Regina Coeli in B Flat* for the first time in this century.

To cultivate musical appreciation in the community, we co-sponsor Summer Sings with the Hoff-Barthelson Music School in Scarsdale and offer seasonal programs in Westchester convalescent homes. Most recently, the chorus sang at the ceremony for Congresswoman Nita Lowey as she was sworn in by Governor Mario Cuomo.

Auditions for new members are held in February and September or by special arrangement. Please contact WCS at 914-693-2453.



PHOTO: JOHN BURGESS



WITH MEMBERS OF
NEW ORCHESTRA OF WESTCHESTER

Jesu, meine Freude

Johann Sebastian BACH

Praise of Harmony

George Frederick HANDEL

*Recitative
Aria*

SHEILA METZGER-BRAIDECH, Soprano

- Intermission -

Four Chorales: Harmonized by Johann Sebastian Bach and Kemal Ebcioğlu

Jesu, meine Freude
Helft mir Gotts Güte preisen
Herliebster Jesu, was hast du verbrochen
Christus, der ist mein Leben

*Each chorale will be presented first as harmonized by Bach and followed by variations
harmonized by IBM computer software program CHORAL.*

Coronation Mass (K.317)

Wolfgang Amadeus MOZART

*Kyrie
Gloria
Credo
Benedictus
Agnus Dei*

*SHEILA METZGER-BRAIDECH, Soprano
ERIKA VAN WYKE, Mezzo-soprano
DAVID LOWE, Tenor
JOHN TROUT, Baritone*

Lyndon Woodside, Music Director



The conducting career of **Lyndon Woodside** has flourished with New York and international guest appearances since he became music director of the Westchester Choral Society in 1965—his first conducting appointment. He now also serves as music director of the Oratorio Society of New York, organist/choir director of Temple Emanu-El in Yonkers, and of the Park Avenue Methodist Church in New York. He conducts regularly at Carnegie Hall, where he participated in "The Concert of the Century" in 1976 and subsequently received a Grammy award for his part in the recording of the event.

Mr. Woodside shared the podium of the American Symphony with Leonard Bernstein and Aaron Copland for an eightieth birthday tribute to

Copland in 1980. For his 1983 European debut in Salzburg, he conducted the European Choral Symposium and the Mozarteum Orchestra in Haydn's *Die Schöpfung*. In 1985, he conducted Britten's *War Requiem* in Coventry Cathedral with the European Festival Chorus and the London Symphony; the following year, he made his Canadian debut as guest conductor of the Symphony Nova Scotia in Halifax. That summer, he was invited to conduct members of the Oratorio Society and the Putnam Chamber Orchestra in Zagreb, Graz, and Venice. He has worked with many famous soloists, including Dame Janet Baker, Samuel Ramey, Justino Diaz, Sir Peter Pears, and Benita Valente.

Born in South Carolina, Mr. Woodside is a graduate of the Cleveland Institute of Music with bachelor degrees in piano and organ, and of the Juilliard School of Music with a master's degree in piano.



BOX 94, WHITE PLAINS, NY 10604

TELEPHONE (914) 693-2453

COVER PHOTOGRAPHY: SUSAN HARRIS

GRAPHICS: COUGAR GRAPHICS, CHRISTINE KOCH

Soloists



SHEILA METZGER-BRAIDECH, Soprano

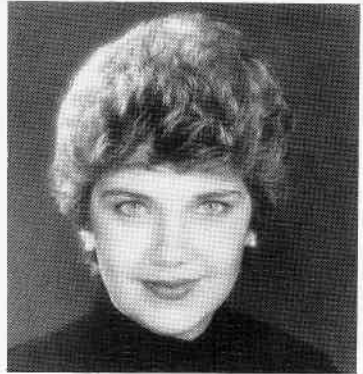
Sheila Metzger-Braidech was born in Cleveland, Ohio, where she received a Bachelor of Music Degree from the Cleveland Institute of Music. A diploma in Voice and Opera Training followed at the Mannes College of Music in New York. With a Fulbright Scholarship she was able to study voice and opera at the Staatliche Hochschule für Musik in Cologne, West Germany, finishing with a Meisterdiplom. She made her operatic debut in Austria at the Vienna Chamber Opera, returning then to Cologne with a contract at the City Opera House. After a contract with the Southeast Bavarian Cities Theater, she started singing guest performances in Würzburg, Salzburg and Innsbruck. She also appeared in a television broadcast of Carl Orff's "Catulli Carmina" in Luxembourg and has made numerous recordings for various radio stations in West Germany.

ERIKA VAN WYKE, Mezzo-Soprano

Versatile mezzo-soprano Erika Van Wyke appears regularly in concert, opera and recital in the New York Metropolitan area. She has appeared as soloist with the New York Choral Society at Carnegie Hall, with the Westchester, Richmond and Taghkanic Chorales, and recently sang as alto soloist in the popular *Messiah Sing-In* at Avery Fisher Hall. She was invited by reknown choral conductor Margaret Hillis to appear as soloist at the Berkshire Choral Festival.

Miss Van Wyke is a frequent guest artist with the Hoboken Chamber Orchestra. She has also appeared with the Westfield Symphony, Fairfield Chamber Orchestra, and the Connecticut Early Music Festival, directed by Igor Kipnis.

The mezzo soprano has played an integral part in the New York City Opera Education Department programs, where she has appeared in nearly 100 performances, most recently as Dorabella in *Così fan tutte*. In addition, she has performed leading roles in regional opera houses across the United States.



DAVID LOWE, Tenor

Tenor David Lowe received both his bachelor and master's degrees from the Juilliard Schools where he was a member of the American Opera Center. Mr. Lowe has performed a wide variety of roles appearing with a number of companies including Wolf Trap Opera, Santa Fe Opera, Boise Opera, Savannah Symphony, Eugene Opera, Hidden Valley Opera and the Spoleto Festival— both USA and Italy. His roles have ranged from Alfredo in *La Traviata* to Eisenstein in *Die Fledermaus* to Tamino in *The Magic Flute*. He toured with Texas Opera Theater in Mollicone's *Starbird* and returned there last fall for a Gershwin/Porter revue. Active in the oratorio field as well, Mr. Lowe has performed Handel's *Messiah*, Bach's *Magnificat* and most recently Mozart's *Mass in C Minor* with the Little Orchestra Society in New York. The young tenor also looks forward to returning to Boise this spring for a production of *The Magic Flute*.

JOHN TROUT, Baritone

A California native, John Trout made his debut in 1975 with the San Francisco Opera and went on to sing with the Western Opera Theatre and the Spring Opera of San Francisco. After diverse roles in Texas opera houses, he moved on to New York, where he made numerous appearances with The After Dinner Opera Company, Opera Orchestra of New York, and with the Opera Ensemble's production of Benjamin Britten's *A Midsummer Night's Dream*. He has been acclaimed for his oratorio performances in Poulenc's *Le Bal Masque* with the San Francisco Chamber Orchestra and Mahler's *Eighth Symphony* with the Utah Symphony, and most recently has been heard with the Virginia Opera and the Northeast Pennsylvania Symphony.



Dr. Kemal Ebcioglu, IBM Researcher

Kemal Ebcioglu, holds a master's degree in music composition and a doctorate in computer science. He has combined his knowledge of music and computers to create the CHORAL program, an expert system that adds bass, tenor and alto accompaniment to the main soprano melody given as input.

The researcher studied Johann Sebastian Bach's chorale harmonizations for five years to develop the 350 rules which comprise the knowledge base for the program. The 350 rules are divided into groups that observe the chorale from multiple viewpoints, such as the harmonic outline of the chorale and the individual melodic lines of the voices. The project is part of the ongoing research in artificial intelligence at IBM's Thomas J. Watson Research Center in Yorktown Heights, NY.

A large computer performs 23 billion instructions in approximately 30 minutes to produce four-part scores in conventional music notation that can be read on a computer screen, printed and performed.

One of the unique features of the program is an intelligent generate-and-test algorithm that incrementally constructs the harmonization of the melody according to a larger set of rules. These complex rules "spell out" unique characteristics of the Bach chorale style and are based on Ebcioglu's study of the Bach chorales and experience with the program.

The harmonization is built stage by stage. CHORAL backtracks and changes notes that it "considers" to be responsible when a dead-end is encountered, just as if it were negotiating a maze and had run into a wall.

While it is unlikely that any expert system could rival Bach, CHORAL would probably receive an above-average to excellent grade in a college composition class, says Ebcioglu. "I did not attempt to write a program that would produce only the beautiful chorales that Bach would have written. Instead, I viewed it as a venture into the frontiers of the capabilities of expert systems and as a tool for the more precise understanding of the Bach chorale style. The results have been very encouraging on both counts."



FOR YOUR INFORMATION AND ENJOYMENT

Performances by the Westchester Choral Society are made possible, in part, with public funds from the New York State Council on the Arts, the National Endowment for the Arts, and from the Westchester Arts Fund of the Council for the Arts in Westchester, which is supported by corporate contributions and the County of Westchester.

This program is being presented at the Performing Arts Center at SUNY College at Purchase. The Center presents professional programming such as its Winter Series and Pepsico Summer fare, featuring internationally recognized artists in dance, drama, music and family programming; and high calibre performances by students enrolled in SUNY/Purchase's professional training programs. The Center is also a cultural center for the area and is used by many regional, professional and community groups. For information regarding rental of any of the theaters, please call 914-253-5949. For information on rental of any other SUNY/Purchase facilities, please call the College Director of Conferences at 914-253-5108.

Smoking is prohibited inside the theater. **Emergency fire exits** are indicated by red exit signs located above the entrance to the house. For your safety, please check the location of the exit nearest your seat. Restrooms and pay phones are located in the lower lobby at the foot of the stairs.

Doctors expecting calls during performances should leave their names and seat locations with the Box Office, and the Public Safety Office emergency number (914-253-5115) with their telephone service.

Lost items will be held in Lost and Found. Please check with the House Manager, or call 914-253-5949 between 9:00 am and 5:00 pm.

Latecomers will be seated at the discretion of the management. No one is permitted on the stage or in the backstage area.

PLEASE NOTE: THE USE OF RECORDING EQUIPMENT OR THE TAKING OF PHOTOGRAPHS IN THE THEATER IS STRICTLY FORBIDDEN. EQUIPMENT WILL BE CONFISCATED BY THE MANAGEMENT.